

idaho chess bulletin

By Richard Vandenburg

The Idaho Chess Assn. has in its possession some books and papers out of the late C.H. Stewart's estate. Mr. Stewart was the top Idaho player and promoter for many, many years and a friend of all that knew him. We are trying to sell some of these items to raise money for our "Idaho Chess Foundation", which was recently started. I would like to list the items here in case any of our readers are interested. You can see that many are quite old and collector's items.

American Chess Bulletin
Dec. 1916 to Feb. 1963. Bound to 1930.
Only two issues missing \$75.00/lot

The Chess Reporter
7 issues covering 1931-32-33
Published at Beverly Hills, Calif. 4.00/lot

NEW YORK 1924: Original edition
by Alekhine, edited by Herman Helms. 4.00

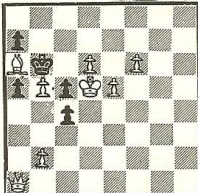
RESHEVSKY-KASHDAN MATCH 1942-43. 4.00

PRACTICAL CHESS by George Koltanowski
1947. Autographed by author 3.50

CHESS FUNDAMENTALS by J.S. Capablanca
1921 3.50

THE CHESS PLAYERS COMPENDIUM
Wm. Cook, 1902 2.50

Problem Corner No. 8, by H. Zajic,
courtesy of Isaac Kashdan.



White to Move
& mate in 3.
White has 8 &
Black 5 pieces.
Send Solutions
by Sept. 10 to:
Dick Vandenburg
2316 Regan Ave.
Boise, ID 83702

I hate myself when I do things like this! You may think this problem is a "kocked" one but I assure you it is workable. My hint to you is that there is a catch in it but if I tell you any more than that, I'll end up giving you the answer. Mr. Kashdan only told his solvers "Black has an unusual set of pawns, and very few moves. Both points should be considered in looking for the key move!" So, you can see that I'm trying to be especially helpful! Lots of ruck.

We had quite a few solvers for No. 6. Those successful were: DUNCAN DAVIDSON (1), RICK GANONG (5), HARRY GLIDDEN (1), and JACK SCHRADER (4) (Oregon); STEVE HUNT (3) (Georgia!); DAN ROGERS (2) (Mont); JERRY WEIKEL (2) (Viet Nam); and HORTON THOMPSON (4), JIM ALBRECHT (4), J.D. MILLER (1), RICK HUBBELL (4), LARRY PRATT (1), J.B. WHITE (2), JOE HUBBELL (3), MEL HORMAN (6), RON JARMON (6), and J. LYMAN JOHNSON, JR. (2) (Wash.). Incorrect was RICHARD MURRAY (-1). The correct answer to No. 6 was ----- Q-R6!

1967 Inland Empire Open
Terry Nelson Mike Murray
French Defense (transposit.)
1. P-Q4 N-KB3
2. N-QB3 P-Q4
3. B-N5 P-K3

Richter's Opening is not strong enough to merit this evasion. More usual here is 3....,B-B4, gaining at least equality according to most authorities. MCO-10 recommends 3....,P-KR3, while according to Trifunovich, best here is 3....,Qn-Q2 (Taimanov-Gligoric, 1965) After the text, White hardly has anything better than transposition into the French.
4. P-K4 B-K2
5. P-K5 N-K5

The Tartakover Variation: Black can try this or 5....,N-N1 if he doesn't like his chances after the Classical 5....,KN-Q2.
6. B-Q2 ?

Evidently played to avoid the drawish 6.BxB,NxN;7.BxQ,NxQ, and the ever-analyzed 7.Q-N4,QxB;8.QxNP,Q-N5. Without going into this latter line, however, it is unlikely that White can accomplish much against the Tartakover. If he wants to try, his best chance is probably the old Forgasz-Tartakover (1907) line 6.NxN,BxB;7.NxB,QxN;8.P-KR3.

6. NxB
7. QxN P-QB4
8. N-KB3 N-QB3
9. B-QN5

White must counter the threat of 9....,PxB;10.N-QN5,B-N5, but 9. PxB seems better than the text, which commits White to the unequal struggle of two knights versus two bishops.

9. B-Q2
10. BxN PxB !
11. O-O R-QN1
12. N-QR4 PxB
13. QxP Q-R4
14. P-QN3 P-QB4
15. Q-KN4 O-O
16. N-N2 P-B5
17. KR-Q1 ?!

A little trap: 17....,B-R6;18.NxQP White perhaps thought that the same trap worked after Blacks next, overlooking that after 17....,Q-B6 18.NxQP??,PxB;19.RxB, his QR is en prise.

17. Q-B6
18. Q-Q4 QxQ
19. RxB B-B4
20. R-B4 KR-B1
21. P-KR4 R-N2

I thought that the immediate 21....,PxB;22.RPxP!,BxPch;23.KxB,RxPch;24.K-N1,RxN;25.RxRP,B-Q1;26.N-Q4 would give White more than his position deserved. With my QR-pawn protected, this combination is a more serious threat.
22. R-N1 PxB
23. RPxP

White evidently saw the above combination and thought to prevent it by protecting his knight, overlooking that the combination was still playable in a slightly modified form. Necessary was 23.BPxP, though needless to say, White would still have a poor game.

23. BxB ch
24. K-B1
Or 24.KxB,RxPch;25.K-N1,RxQnP26. N-Q4,R/7xN and wins, Now White collapsed.
24. RxBP
25. N-Q4 BxN
26. N-B4 RxB
27. Resigns

Notes were by Mike Murray

JUNE: "ILLINOIS CHESS BULLETIN"

Greater Chicago Open
RICHARD VERBER ED VANO

1. P-K4 P-QB4
2. N-KE5 P-Q3
3. P-Q4 PxB
4. NxB N-KB3
5. N-QB3 P-K3
6. B-QB4 N-B3
7. B-K5 B-K2
8. B-N3 O-O
9. O-O N-QR4
10. P-B4 P-K4
11. N-B5 BxN
12. PxB NxB
13. RPxN P-QR3
14. Q-B3 PxB
15. B-Q4 Q-Q2
16. QxBF KR-K1
17. QR-Q1 QR-Q1
18. R-Q3 Q-B3
19. R-N3 K-R1
20. Q-N5 KR-N1
21. R-K1 QR-K1
22. RxB RxB
23. BxN R-Kcch
24. K-B2 Q-B4ch
25. KxR R-Klch
26. K-B1 Resigns

2nd 1968 Wamsley

Catledge Manter
1. P-Q4 N-KB3
2. N-KE3 P-Q3
3. N-B3 QN-Q2
4. P-K4 P-K4
5. B-QB4 B-K2
6. B-K3 P-QB3
7. B-N3 Q-B2
8. N-N5 O-O
9. Q-K2 P-N4
10. P-QR3 P-KR3
11. P-KR4! P-QR3
12. O-O-O P-QR4
13. P-B4 B-R3
14. Q-B3 P-N5
15. RPxP RPxP
16. N-N1 PxB
17. BxB P-B4
18. P-K5 PxB
19. BxB NxB
20. PxB PxB
21. PxB N-R2?
22. BxPch! K-R1
23. RxB ch! Resigns

MORE BOEING NEWS

Alan Clark won July Boeing 30/30 tournament with perfect 4-0 score. Lew Henry, Mike Murray & George LeCompte were second.